



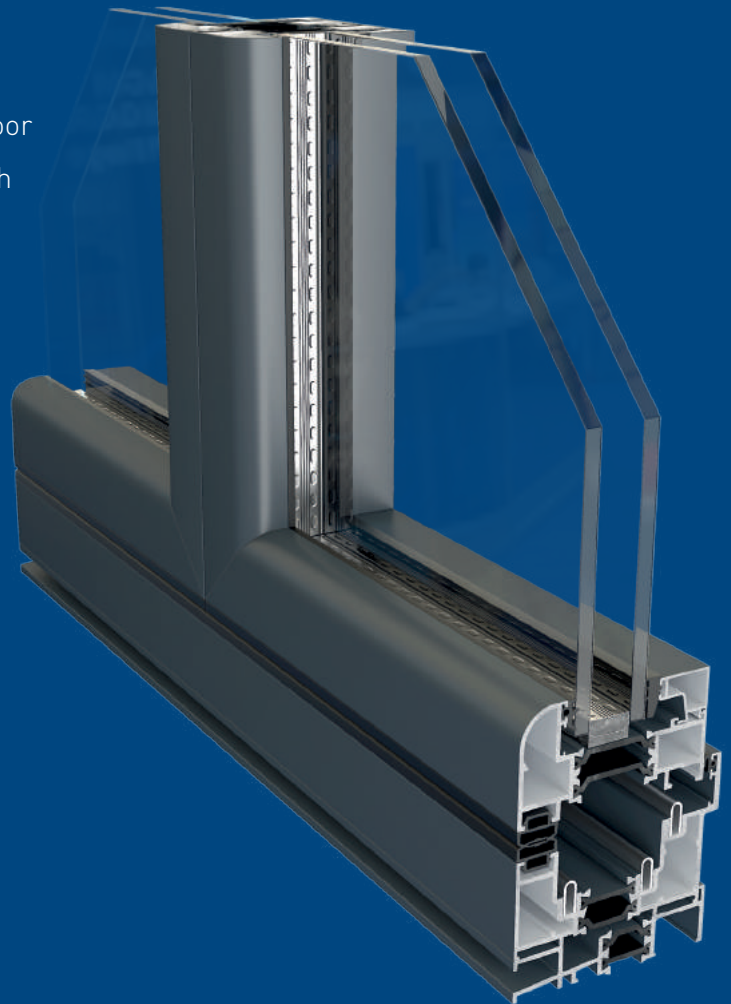
smart
architectural aluminium

Visofold 6000

Visofold 6000 is a high-quality, high-performance slide and fold door. Featuring slim profiles, the door provides a contemporary, elegant solution for both residential and commercial applications.

- Maximum flexibility – minimum space requirement
- Slim lines and discrete hardware maximise light

The images illustrate different types of suitable applications for Visofold 6000 and are not binding in detail or specification



BES 668681



FM21582



EMS554307



OHS571955



ENMS634370



Visofold 6000

Visofold 6000's flexibility makes it suitable for both commercial and residential projects where large opening apertures are required, with the system maximising light and space to give unimpeded views. This highly-versatile, easy-to-operate system is the perfect option for even the largest project, capable of opening up an entire wall, yet presenting a contemporary, elegant glazed façade when closed.

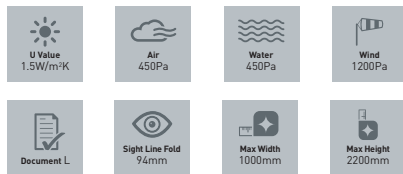
With high-security glazing, robust locking mechanisms (including multi-point locks on the main opening sashes, and shoot-bolts on the floating mullions), an unrivalled colour range and the option of colour-matched accessories, the system can be tailored to meet each project's specific requirements.

Delivering the perfect combination of strength and performance, Visofold 6000 profiles feature a polyamide thermal break that enhances the system's thermal performance as well as high-quality EPDM gaskets and weather brushes to aid weather resistance. Fully compliant with the requirements of Building Regulations Document L 2010, the doors have the option of either low thresholds for unimpeded, easy access, or rebated thresholds that offer improved weather resistance.

The system features a choice of internally or externally folding sashes, which when open, sit flush to the frame. Sashes are hung from a floating mullion and slide on a recessed bottom roller and top guide, which allow ultra-slim profiles, smooth operation and robust security.

Technical Performance

U Value	1.5W/m ² K using a 1.0 centre pane
Air	Class 2, 450Pa
Water	Class 8A, 450Pa
Wind	Class 3, 1200Pa
Document L Compliant	



Dimensions

Frame Width	88mm
Frame Depth	76 or 82mm
Typical Sight Line	94mm for Slide and Fold Door
Glass	24, 28, 32 or 40mm double or triple glazed units

Recommended Design Limits

Max Sash Width	1000mm
Max Sash Height	2200mm
Max Sash Weight	100kg

Slide & Fold Door

- Door sashes are moved to the side in a concertina fashion
- Smooth, easy and reliable operation
- Slim profiles maximise open space
- Integrates outdoor and indoor living space

